



# DOURO WINE REGION WALKING TRAIL I VILA REAL



The "Douro Wine Region Walking Trail I" is a linear trail which begins next to the Station's Garden at Largo da Estação Ferroviária of Vila Real and ends in the village of Nogueira.

This trail runs along a path overlooking the Corgo River. It makes it possible to cover a good part of the south of Vila Real municipality within the Douro Demarcated Region.

This small trail crosses an old railway bridge of the Corgo Line, developing along the way of the Corgo Line Eco-track, in a slope along the left bank of the river, marked by the presence of primary vineyards, only interrupted in less favourable situations with the persistence of natural shrub vegetation.

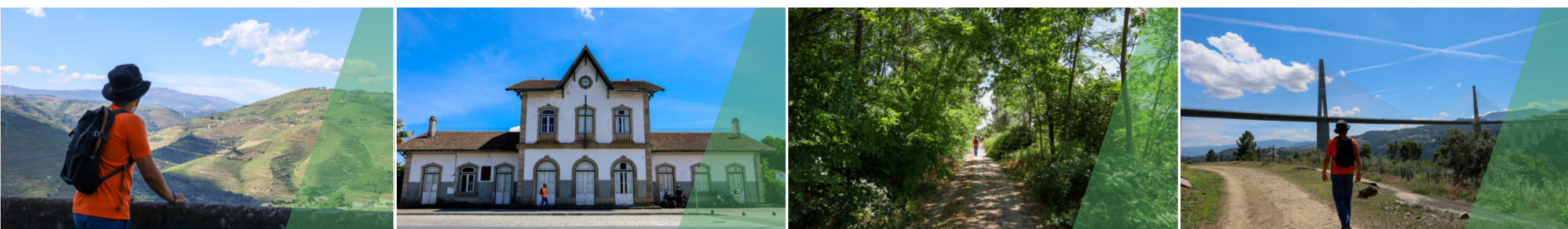
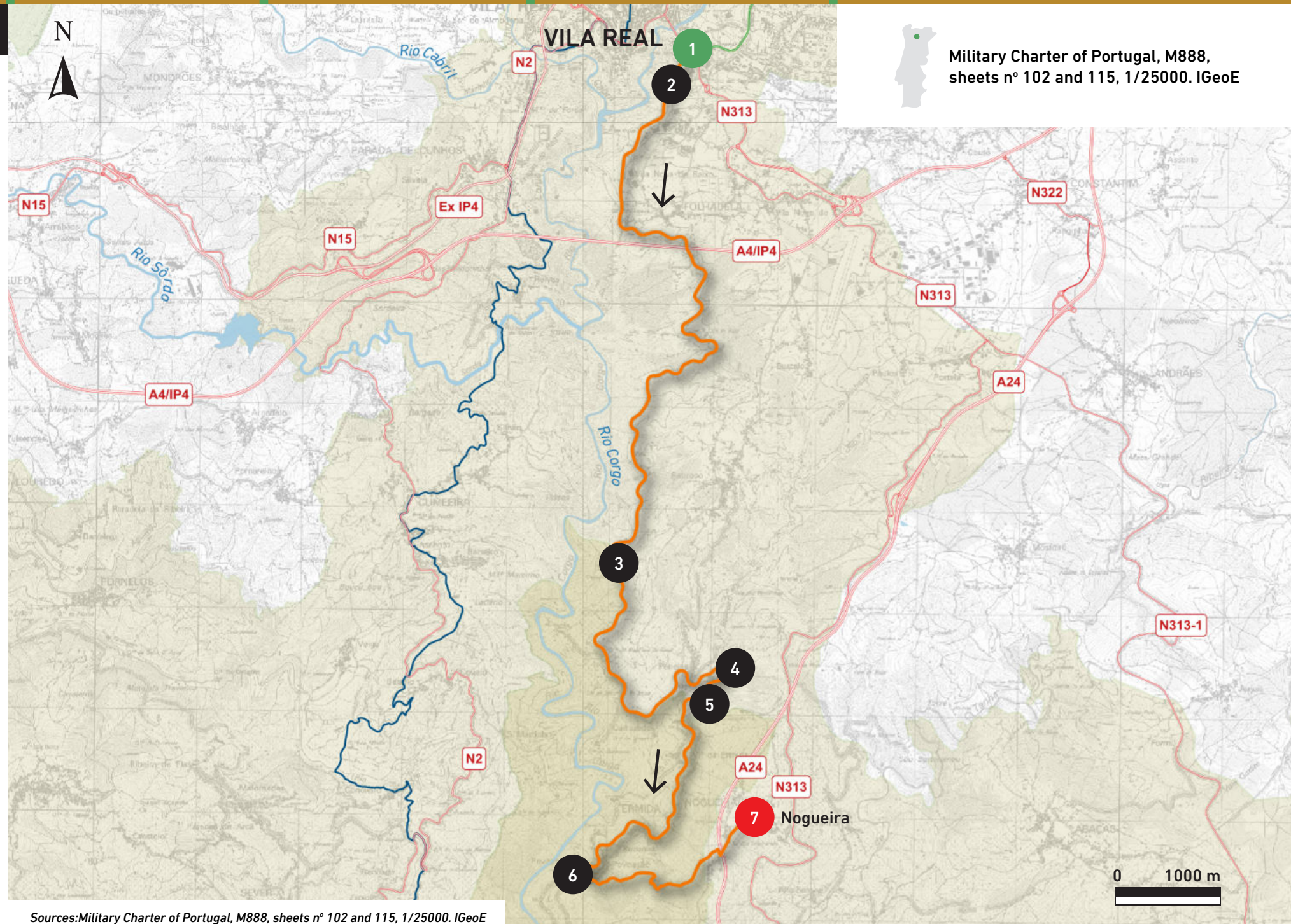
The trail passes the old railway halt of Cruzeiro and the village of Penelas, where you can appreciate the architectural beauty of the Santa Luzia Chapel. After crossing another railway bridge on the Corgo Line, the trail also passes the Carrazedo Railway Station, allowing you to experience the vitality the railway once provided in these parts after its implementation in the early 20th century.

The most demanding section of the trail is the climb towards the village of Ermida until it ends at the top of the slope in Nogueira.

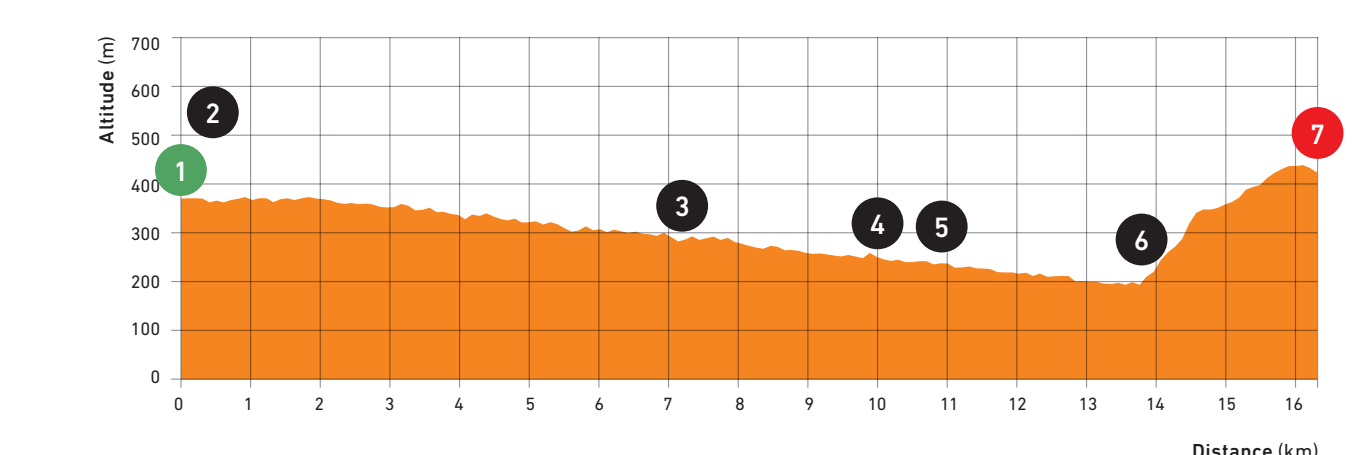
TYPE OF TRAIL	DISTANCE	DURATION	MIN-MAX	CUMULATIVE GAP
→ Linear	16,0 km	5 h 10 min.	223 m  504 m	+475 m  -414 m

## CAPTION

- Walking Trail PR3 VRL
- Recommended Way
- Corgo Line Eco-track
- Portuguese Way of St. James
- Douro Demarcated Region
- Alto Douro Wine Region
- 1 Railway Station's Garden  
Início da PR3 VRL  
41° 17' 41" N, 7° 44' 19" W
- 2 Railway Bridge of Corgo Line
- 3 Cruzeiro Railway Halt
- 4 Railway Bridge of Corgo Line
- 5 Railway Station of Carrazedo
- 6 Santo Amaro Chapel
- 7 Nogueira Parish Church  
End of PR3 VRL  
41° 13' 38" N, 7° 43' 56" W



## GRADIENT PROFILE



## GRADING

### SOMEWHAT DIFFICULT

The difficulty level is represented by 4 different symbols each of them ranges from 1 (the easiest) to 5 (the most difficult).

Environmental adversity <b>1</b>	Orientation <b>2</b>	Type of ground <b>2</b>	Physical effort <b>3</b>
-------------------------------------	-------------------------	----------------------------	-----------------------------

Calculated according to Mide (Método de Información de Excursiones)



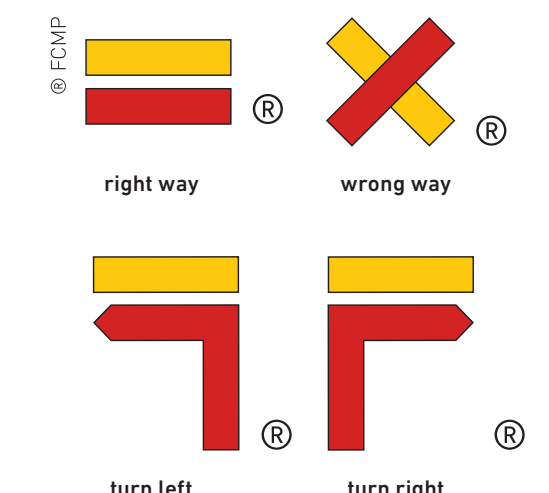
## WALKING CODE

Follow only signalized tracks; Avoid making noise and disturb local peace and quiet; Watch but do not disturb the animals; Do not damage vegetation, leave waste, make fire, collect plants or rocks; Be kind to people you may meet; In case of accident, inform your position using the numbers on the map.

## RECOMMENDED SEASON

The walking trail may be done any time of the year, although some precautions shall be taken into account considering the high temperatures during the summer season and the low temperatures, fog and snowfall during the winter season.

## TRAIL SIGNAGE



## USEFUL CONTACTS

SOS: 112  
Municipality of Vila Real (+351) 259 308 100  
Tourist Office (+351) 259 308 170

