

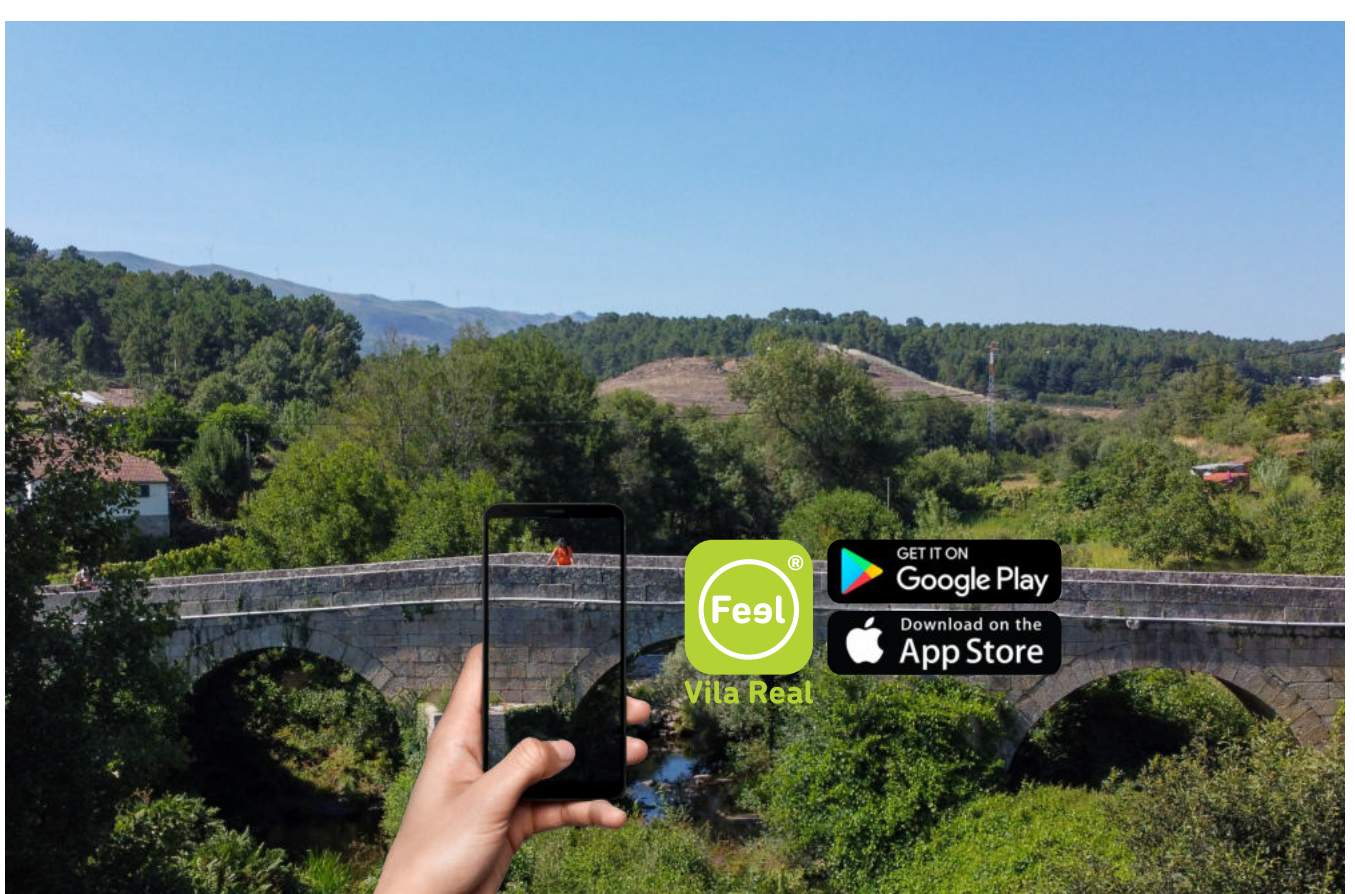
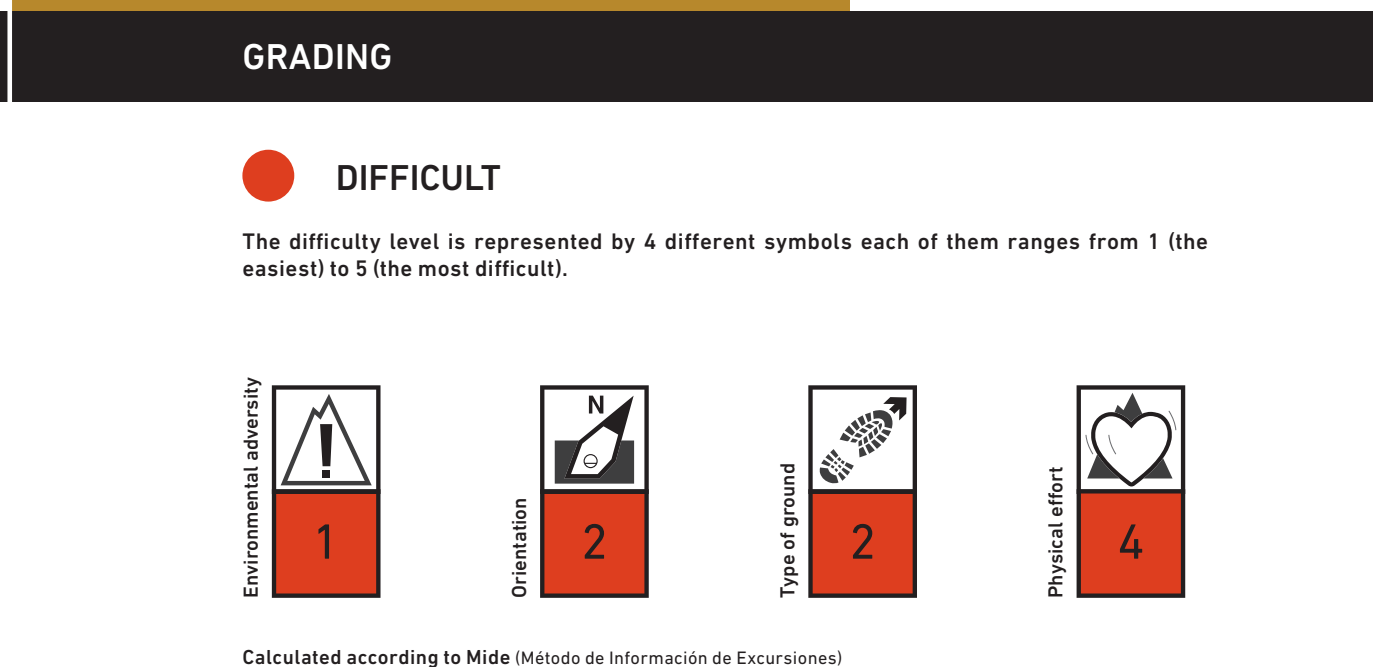
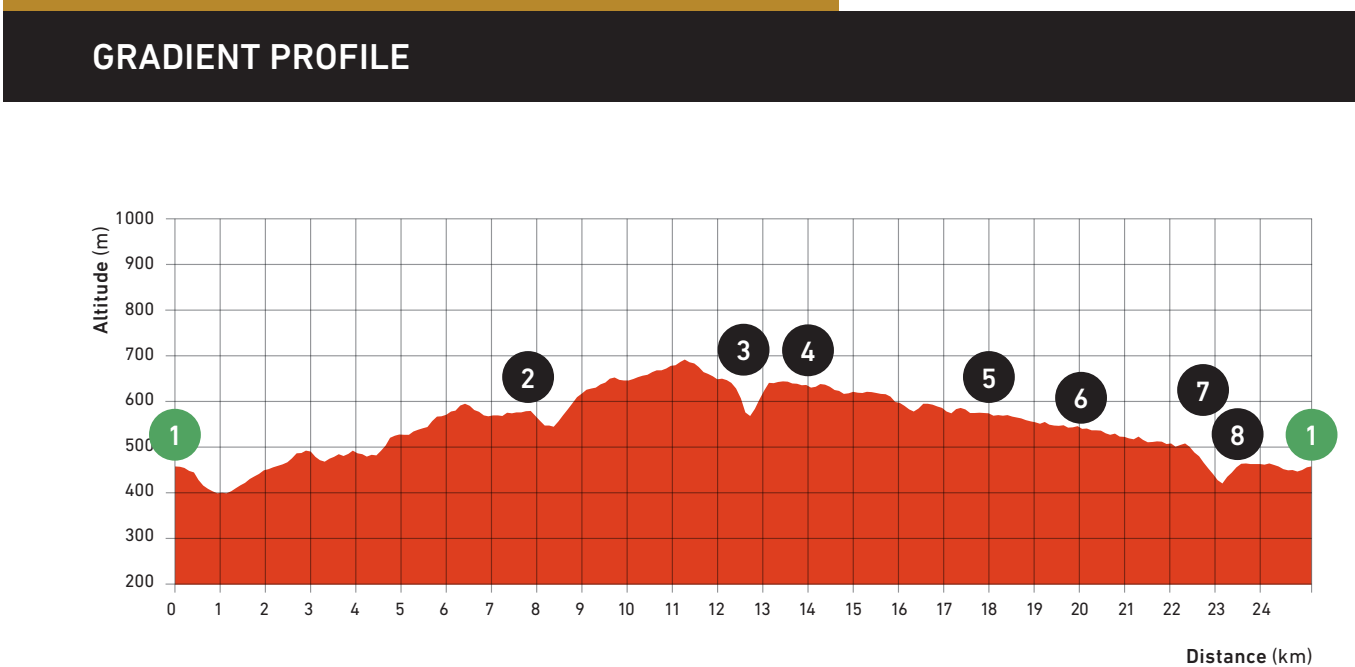
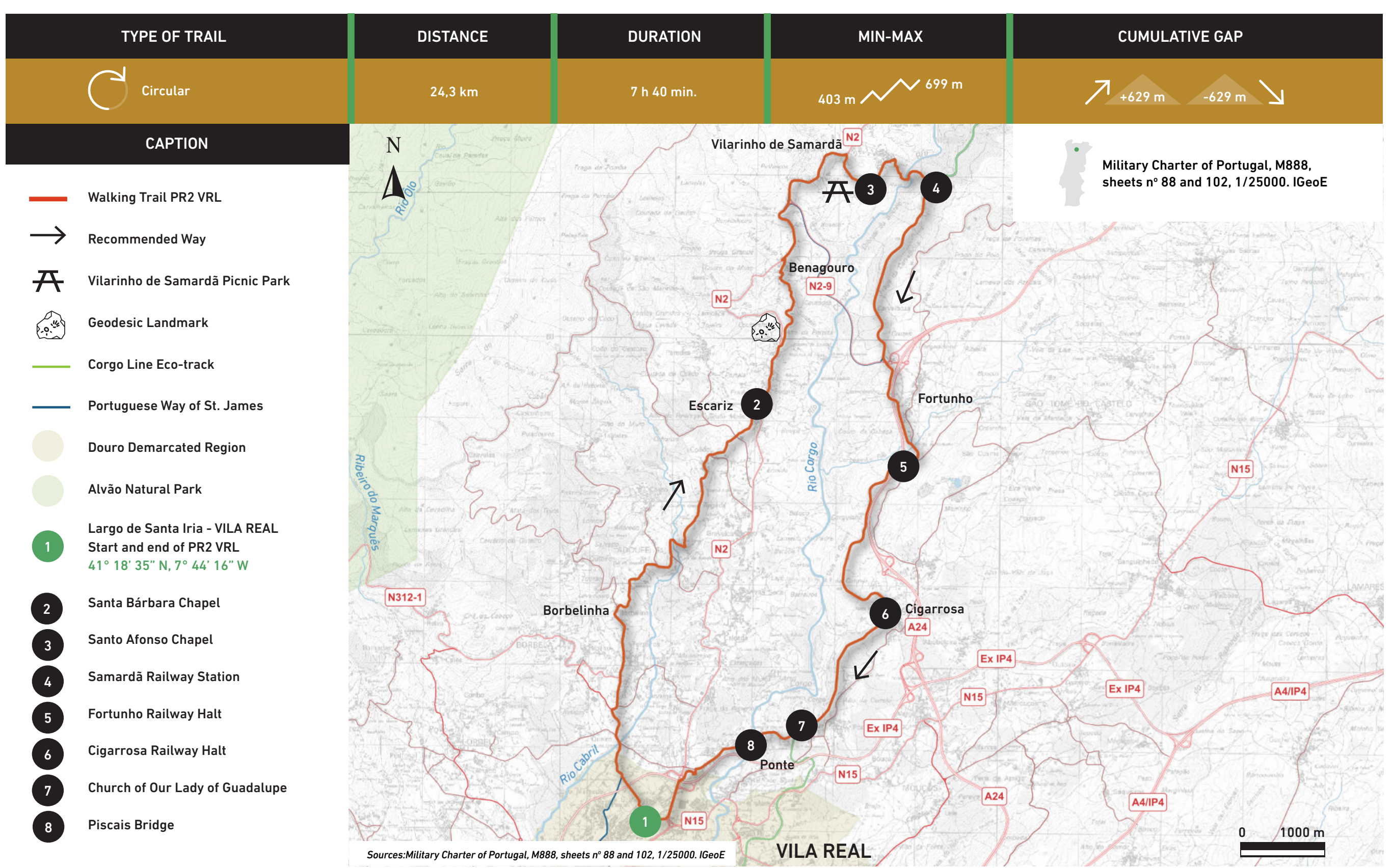


## NORTHERN CORGO VALLEY WALKING TRAIL VILA REAL



The “Northern Corgo Valley Walking Trail” is a circular trail that starts and ends next to the information board next to the Santa Iria cemetery. In its initial section, the trail follows the route of the Portuguese Way of St. James, passing through the villages of Ferreiros and Borbelinha, where you can appreciate the commanding presence of the Alvão Mountain, a dominant element of the landscape that will accompany you until the end of the trail. In turn, the more distant Marão Mountain reveals itself as we climb and walk in more open terrain with a broader view. Between ascents and slopes, the Corgo Valley shows itself to its full extent, and the trail continues towards Escariz and Benagouro until reaching, further ahead, its northernmost point at Vilarinho de Samardã, where Camilo Castelo Branco lived “the first and only happy years of his youth”.

Descending to the bed of the Corgo River, the return to the starting point is made by the eastern slope of the valley, marked by the presence of terraces for grazing and the riverside flora that dominates the water lines. Almost always following the route of the old railway line, the trail passes by the old railway halts of Fortunho and Cigarrosa and near the village of Ponte, where you can visit the Church of Our Lady of Guadalupe, one of the main examples of the religious focus around Vila Real in the 15th century.



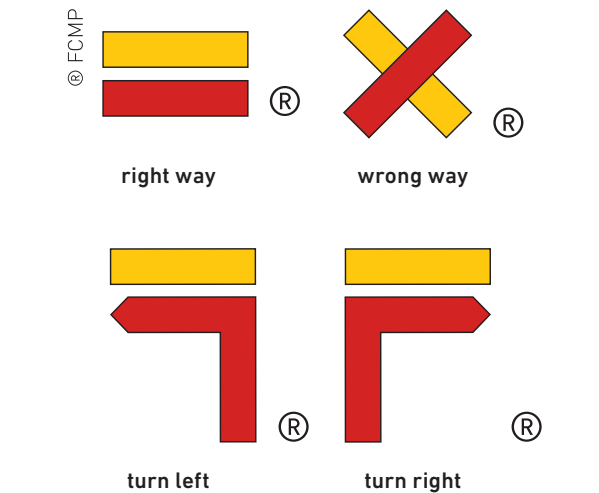
### WALKING CODE

Follow only signalized tracks; Avoid making noise and disturb local peace and quiet; Watch but do not disturb the animals; Do not damage vegetation, leave waste, make fire, collect plants or rocks; Be kind to people you may meet; In case of accident, inform your position using the numbers on the map.

### RECOMMENDED SEASON

The walking trail may be done any time of the year, although some precautions shall be taken into account considering the high temperatures during the summer season and the low temperatures, fog and snowfall during the winter season.

### TRAIL SIGNAGE



### USEFUL CONTACTS

SOS: 112  
Municipality of Vila Real (+351) 259 308 100  
Tourist Office (+351) 259 308 170

