



FOJO DO LOBO WALKING TRAIL VILA REAL



The "Fojo do Lobo Walking Trail" is a circular trail that starts and ends near the information board located in Samardã.

The trail heads east towards the Samardã stream. It continues south, following the valley of this water line, between mud walls, pastures and other agricultural fields, until it passes near the Sabugueiro geodesic landmark, the route's highest point.

The short trail continues westwards to Fojo do Lobo, a unique place due to its ancestral relationship between wolves and man. It is impossible to remain indifferent to its unique architectural configuration, which consists of a rough circular wall, taking advantage of the slope of the terrain, about 50 metres in diameter and slightly inclined inwards.

This type of structure was ancestrally used as a trap for wolves, the animals being lured inside by a goat that was left there to their fate.

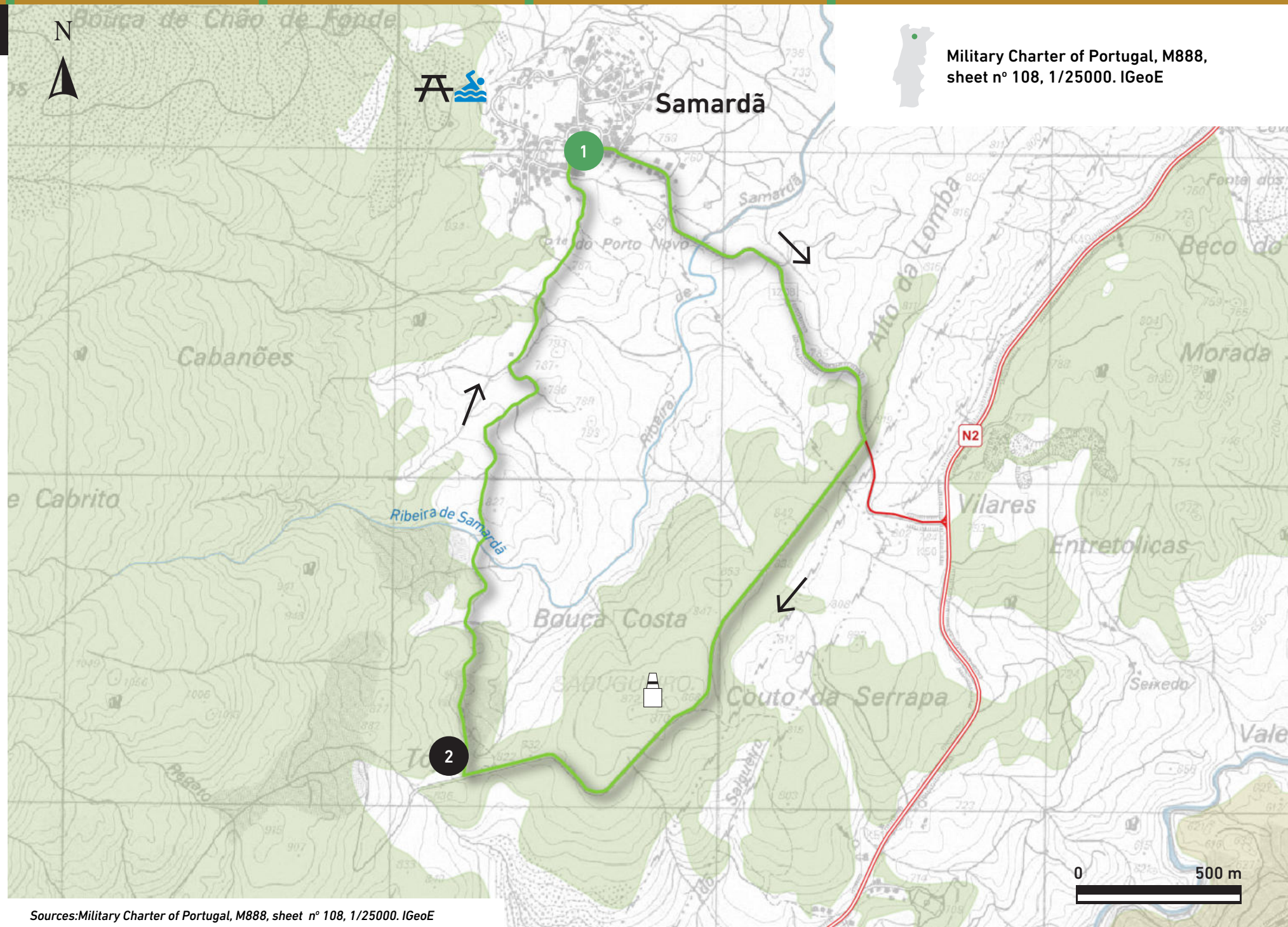
The wall configuration made it easy for the wolf to enter but impossible for it to go, especially after it had been satiated. It left it at the mercy of the hunters, who displayed it as a trophy around the village once the kill was over.

The trail now heads north, back to its starting point, circling different oaks, pine forests and other needle trees and, near the village of Samardã, agricultural land, forming a diverse landscape mosaic.

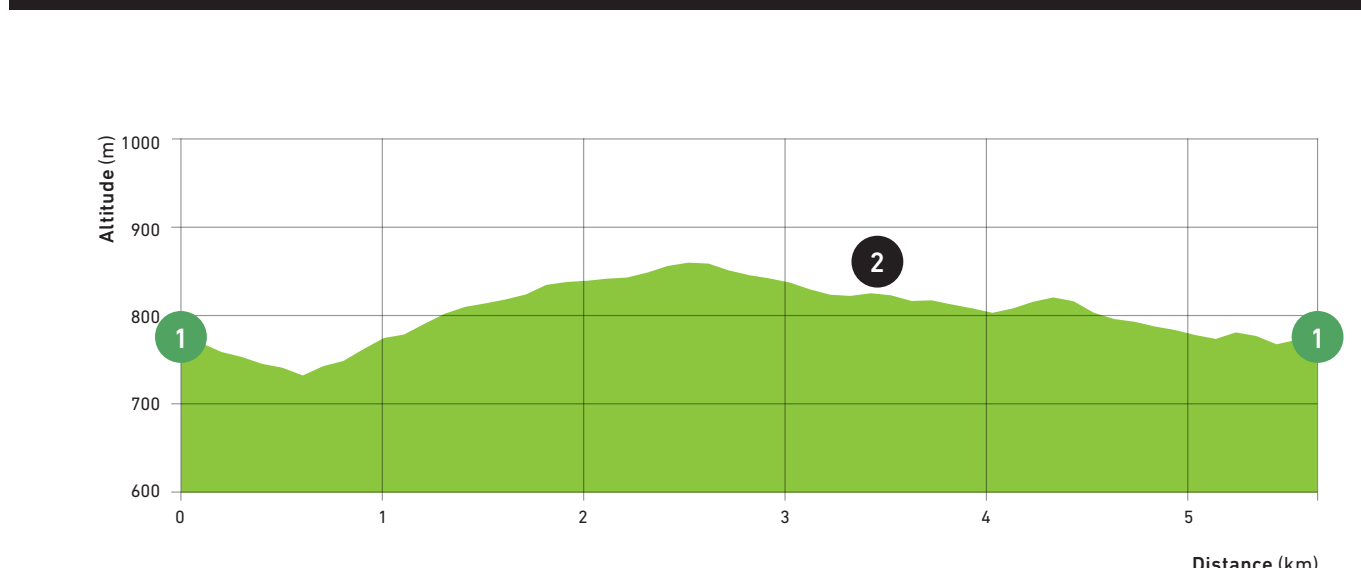
TYPE OF TRAIL	DISTANCE	DURATION	MIN-MAX	CUMULATIVE GAP
Circular	5,6 km	2 h 25 min.	733 m 861 m	+326 m -326 m

CAPTION

- Walking Trail PR10 VRL
- Recommended Way
- Samardã Leisure Park and Swimming Pool
- Geodesic Landmark
- Forest Perimeter of the Marão, Vila Real and Ordem Mountains
- Forest Perimeter of São Tomé do Castelo Mountain
- Samardã
Start and end of PR10 VRL
41° 24' 26" N, 7° 42' 54" W
- Fojo do Lobo



GRADIENT PROFILE



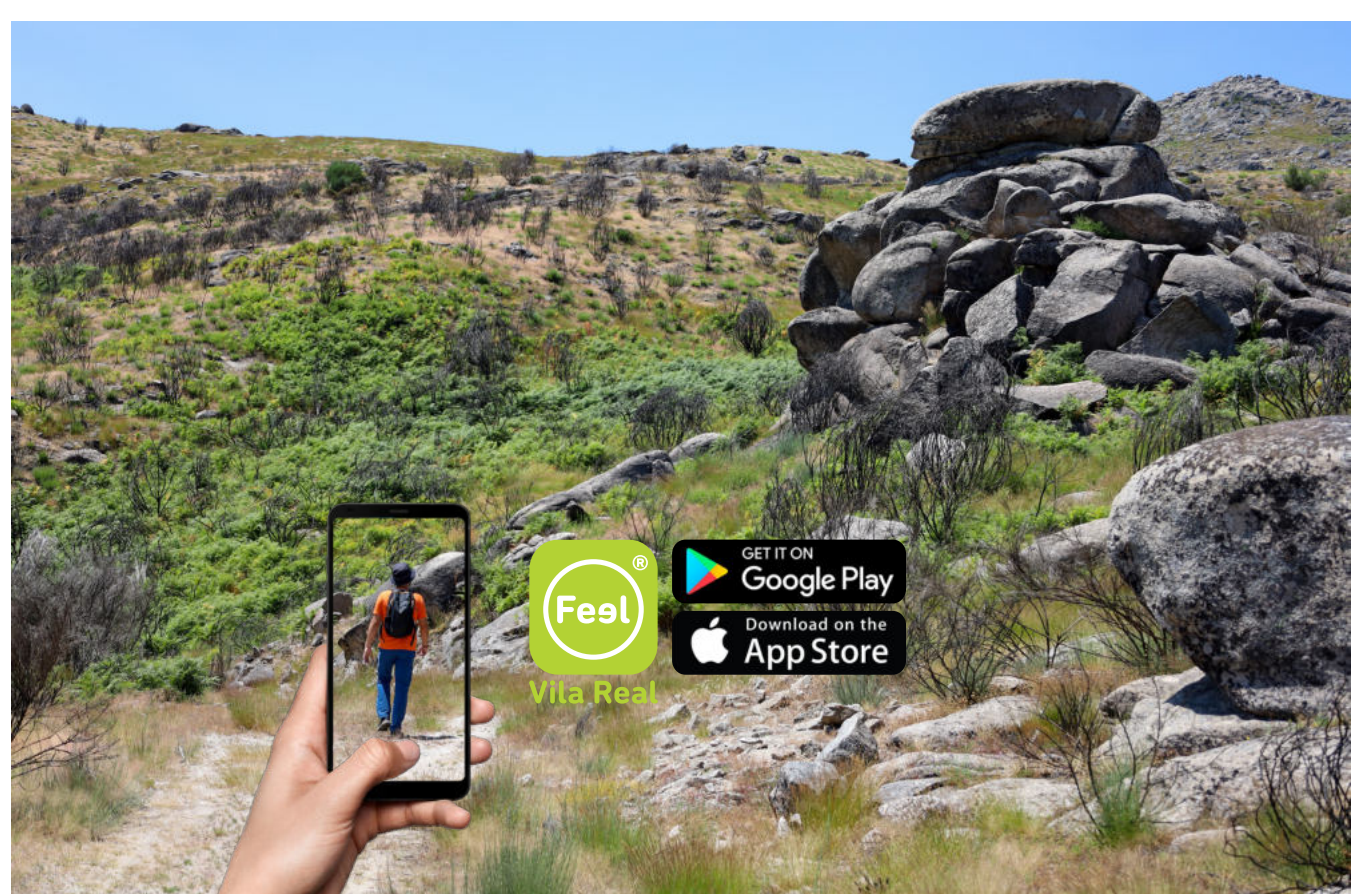
GRADING

EASY

The difficulty level is represented by 4 different symbols each of them ranges from 1 (the easiest) to 5 (the most difficult).

- Environmental adversity: 1
- Orientation: 2
- Type of ground: 2
- Physical effort: 2

Calculated according to Mide (Método de Información de Excursiones)



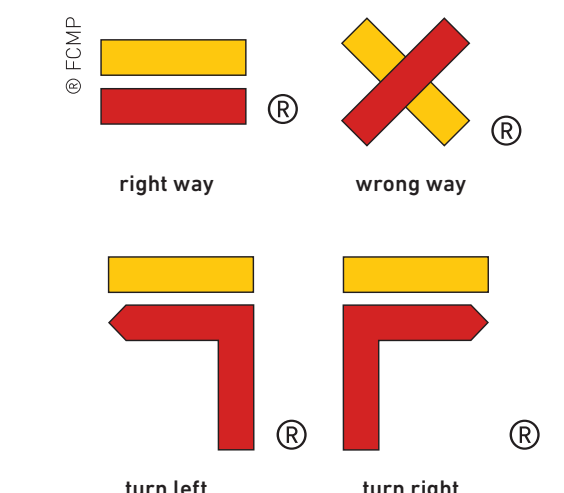
WALKING CODE

Follow only signalized tracks; Avoid making noise and disturb local peace and quiet; Watch but do not disturb the animals; Do not damage vegetation, leave waste, make fire, collect plants or rocks; Be kind to people you may meet; In case of accident, inform your position using the numbers on the map.

RECOMMENDED SEASON

The walking trail may be done any time of the year, although some precautions shall be taken into account considering the high temperatures during the summer season and the low temperatures, fog and snowfall during the winter season.

TRAIL SIGNAGE



USEFUL CONTACTS

SOS: 112
Municipality of Vila Real (+351) 259 308 100
Tourist Office (+351) 259 308 170

