

## **Cartografia**

Carta 2.1. Análise dos PDM - Cartas de ordenamento

Carta 2.2 Análise dos PDM - REN

Carta 2.3. Análise dos PDM - RAN

Carta 2.4. Carta de Ordenamento do POARC

Carta 2.5. Delimitação do solo urbano, do solo rural e do plano de água

Carta 4.1. Modelo digital do terreno - altimetria

Carta 4.2. Modelo digital do terreno - declives

Carta 4.3. Geologia

Carta 4.4. Unidades-solo principais

Carta 4.5. Uso do solo

Carta 4.6. Armação do terreno

Carta 5.1. Áreas de vegetação, segundo o interesse conservacionista

Carta 5.2. Unidades de paisagem

Carta 7.1. Modelo de Organização do Território

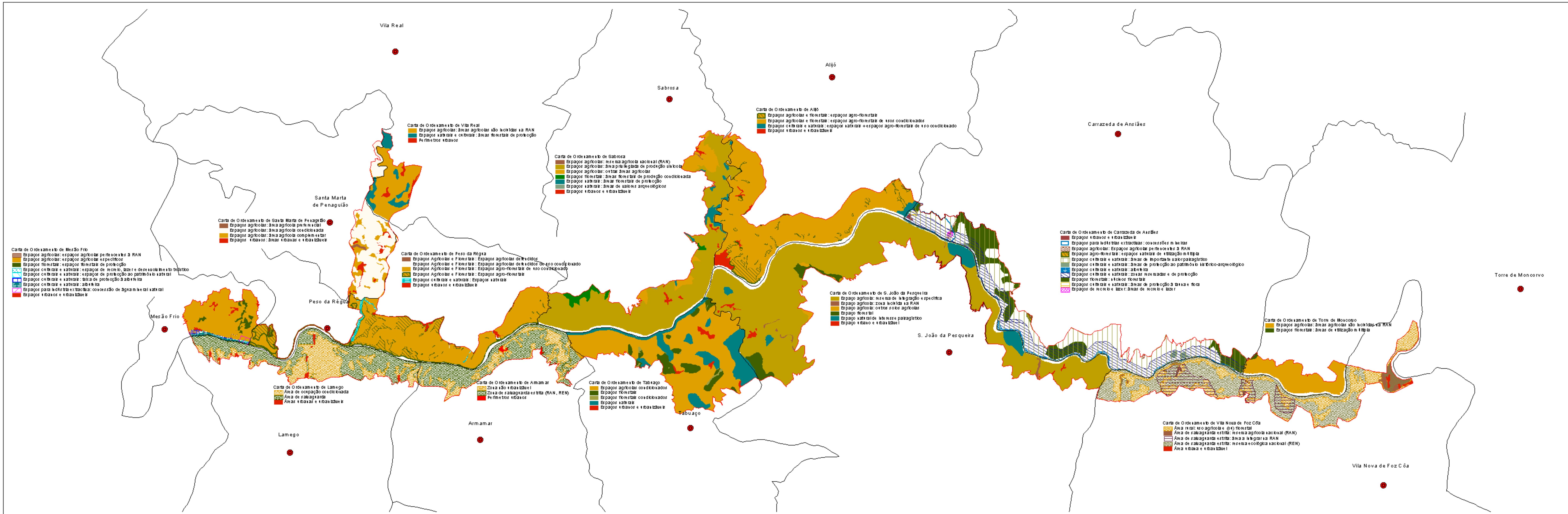
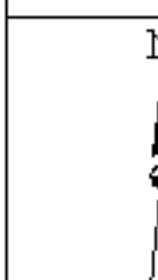
Carta 7.2. Estrutura Ecológica

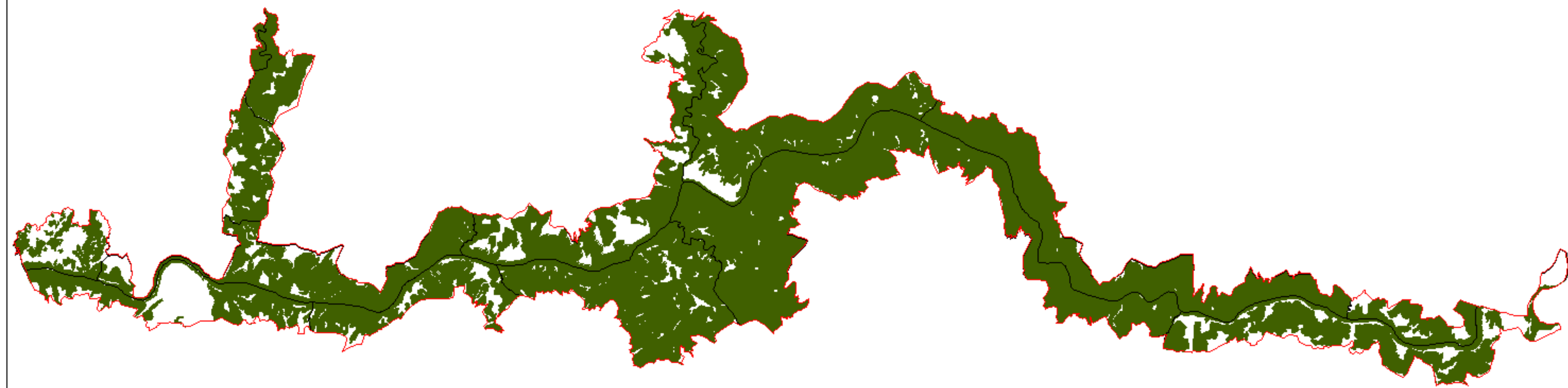
LEGENDA :

- Limite do PIOT - ADV
- Limite dos Concelhos
- Sedes de Concelho

Escala : 1/100000

Carta nº 2.1








PLANO INTERMUNICIPAL DE ORDENAMENTO DO TERRITÓRIO  
ALTO DOURO VINHATEIRO (PIOT-ADV)

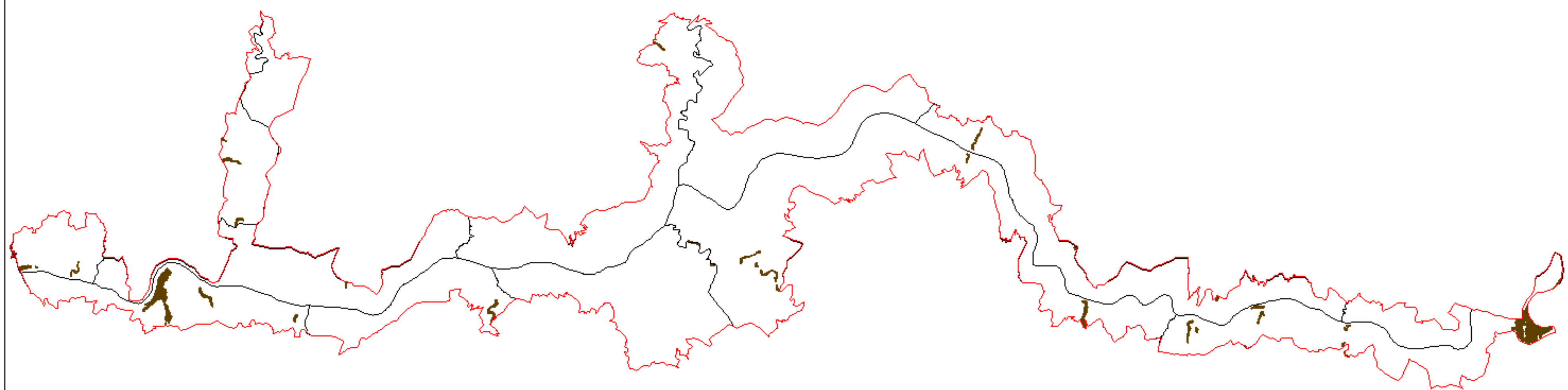
ANÁLISE DOS PDM - REN

LEGENDA :

-  Limite do PIOT - ADV
-  Limite dos Concelhos
-  Reserva Ecológica Nacional - REN

Escala : 1/100000

Carta n.º 2.2




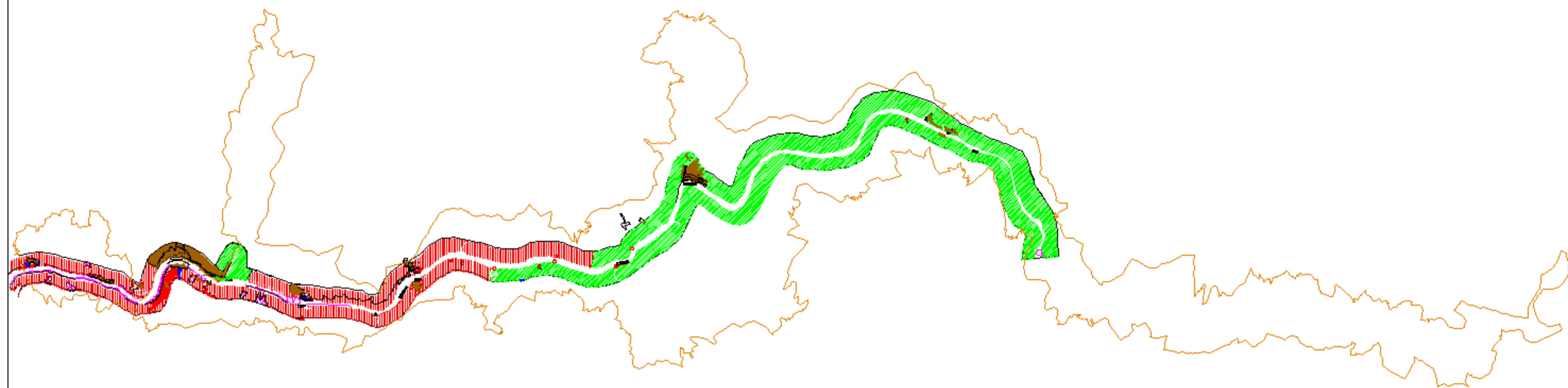
PLANO INTERMUNICIPAL DE ORDENAMENTO DO TERRITÓRIO  
ALTO DOURO VINHATEIRO (PIOT-ADV)


ANÁLISE DOS PDM - RAN

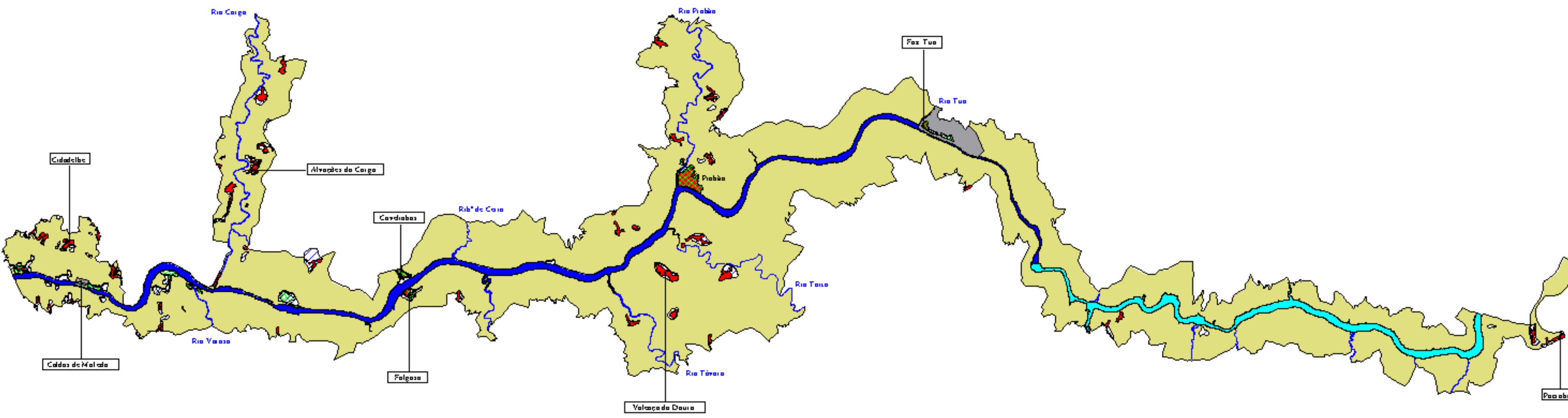
LEGENDA :

- Limite do PIOT - ADV
- Limite dos Concelhos
- Reserva Agrícola Nacional - RAN

 Escala : 1/165000 Carta n.º 23



<p>PLANO INTERMUNICIPAL DE ORDENAMENTO DO TERRITÓRIO ALTO DOURO VINHATEIRO (PIOT-ADV)</p>	
<p>CARTA DE ORDENAMENTO DO POARC (PRINCIPAIS CLASSES)</p>	
<p>LEGENDA :</p> <ul style="list-style-type: none"> <li>ESPAÇOS NATURAIS E DE ELEVADO VALOR PAISAGÍSTICO  <span style="display: inline-block; width: 15px; height: 10px; background-color: #90EE90; border: 1px solid black; margin-right: 5px;"></span> Espaços Naturais e de Elevado Valor Paisagístico</li> <li>ESPAÇOS AGRÍCOLAS  <ul style="list-style-type: none"> <li><span style="display: inline-block; width: 15px; height: 10px; background-color: #FF0000; border: 1px solid black; margin-right: 5px;"></span> Espaços com Elevada Potencialidade Agrícola</li> <li><span style="display: inline-block; width: 15px; height: 10px; background: repeating-linear-gradient(45deg, transparent, transparent 2px, #FF0000 2px, #FF0000 4px); border: 1px solid black; margin-right: 5px;"></span> Outros Espaços Agrícolas</li> </ul> </li> <li>ESPAÇOS FLORESTAIS  <ul style="list-style-type: none"> <li><span style="display: inline-block; width: 15px; height: 10px; background-color: #FF00FF; border: 1px solid black; margin-right: 5px;"></span> floresta de Proteção</li> <li><span style="display: inline-block; width: 15px; height: 10px; background: repeating-linear-gradient(-45deg, transparent, transparent 2px, #FF00FF 2px, #FF00FF 4px); border: 1px solid black; margin-right: 5px;"></span> floresta de Produção</li> </ul> </li> <li>ESPAÇOS URBANOS  <span style="display: inline-block; width: 15px; height: 10px; background-color: #8B4513; border: 1px solid black; margin-right: 5px;"></span> Espaços Urbanos</li> <li>ESPAÇOS DE VOCAÇÃO TURÍSTICA  <span style="display: inline-block; width: 15px; height: 10px; background-color: #0000FF; border: 1px solid black; margin-right: 5px;"></span> Espaços de Vocação Turística</li> <li><span style="display: inline-block; width: 15px; height: 10px; border: 2px solid orange; margin-right: 5px;"></span> LIMITE DO PIOT-ADV</li> </ul>	
	<p>Escala 1/165000</p>
<p>Carta nº 2.4</p>	
<p>Universidade de Trás-os-Montes e Alto Douro      Julho 2001</p>	







PLANO INTERMUNICIPAL DE ORDENAMENTO DO TERRITÓRIO  
ALTO DOURO VINHATEIRO (PIOT-ADV)


DELIMITAÇÃO DO SOLO URBANO, DO SOLO RURAL  
E DO PLANO DE ÁGUA

LEGENDA :



**Solo urbano**


-  Espaços Urbanos (POARC)
-  Parâmetros Urbanos (PDM)
-  Aglomerado
-  Espaços para Indústrias (PDM)


**Solo rural**

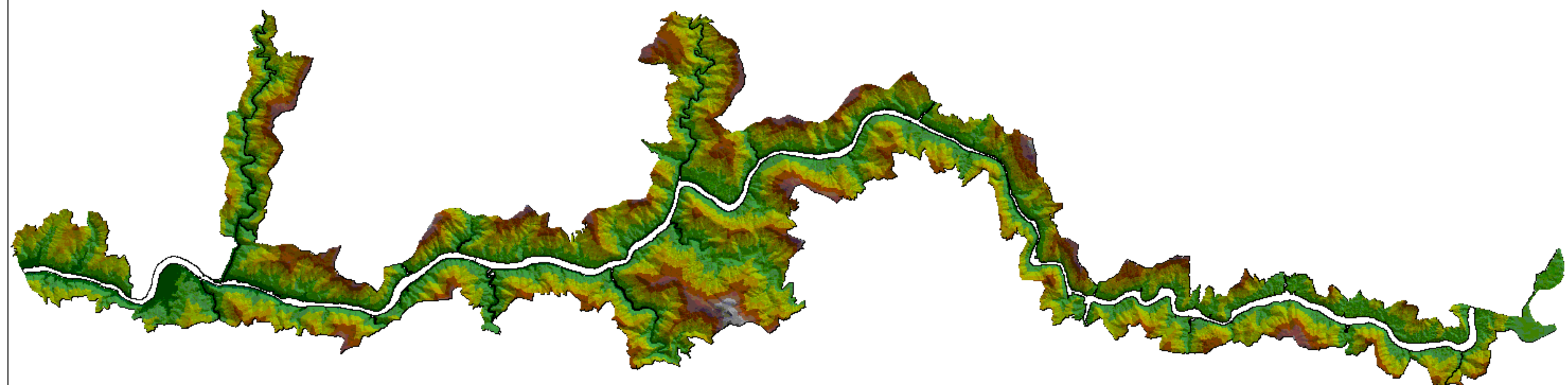
-  Solo rural









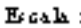


**Plano de água**

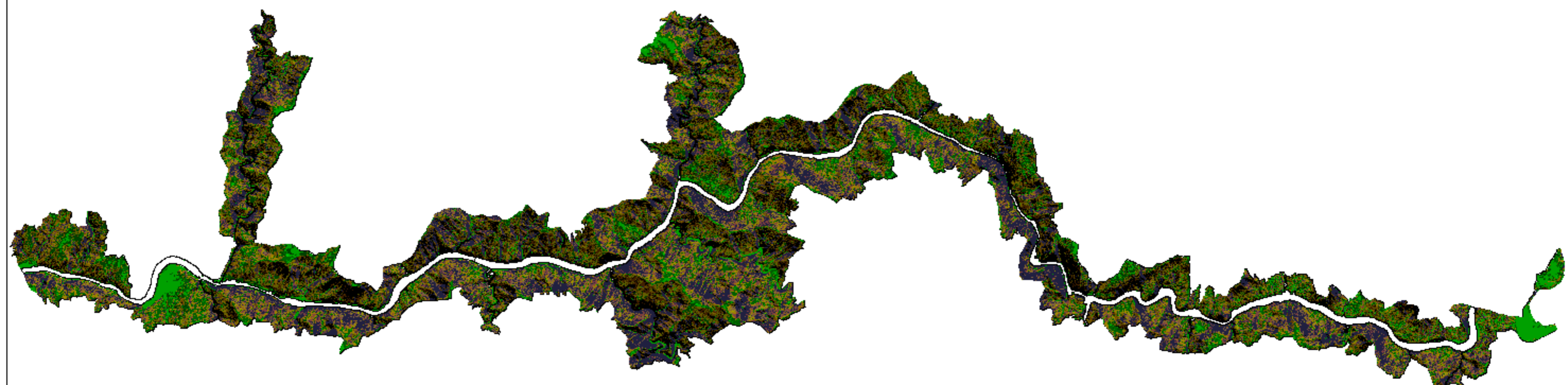
-  Albufeira da Régua e Campanhã (POARC)
-  Albufeira da Valinha


 Escala : 1/163000 Carta n.º 25

 Universidade de Trás-os-Montes e Alto Douro Julho 2001

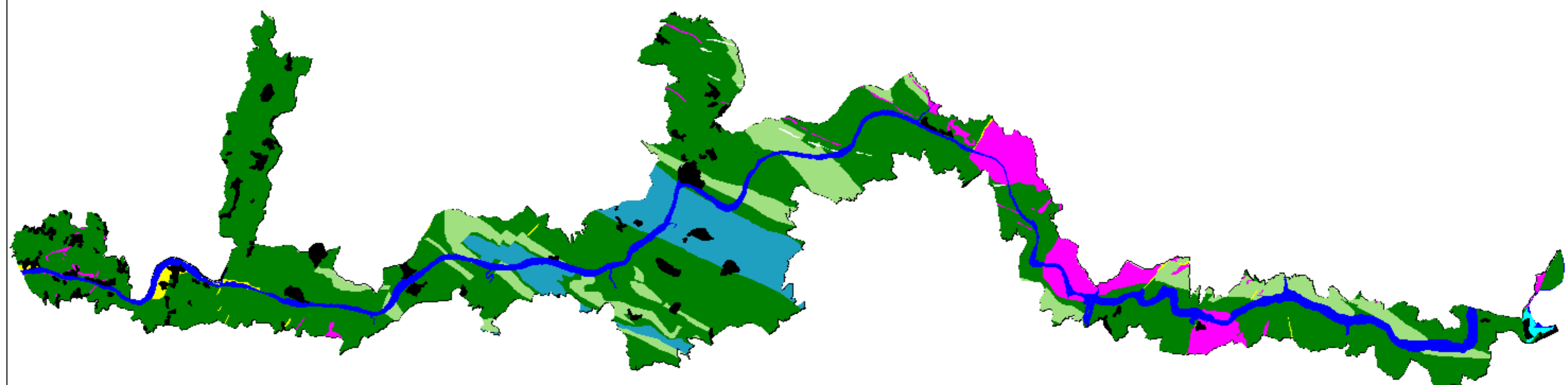


PLANO INTERMUNICIPAL DE ORDENAMENTO DO TERRITÓRIO		
ALTO DOURO VINHATEIRO (PIOT-ADV)		
MODELO DIGITAL DO TERRENO - Altimetria		
LEGENDA :		
	Limite do PIOT - ADV	
Altitude ( m )		
	700 - 800	
	600 - 700	
	500 - 600	
	400 - 500	
	300 - 400	
	200 - 300	
	100 - 200	
	0 - 100	
	Escala : 1/1:5000	Carta n.º 1
	Universidade de Trás-os-Montes e Alto Douro	Julho 2001

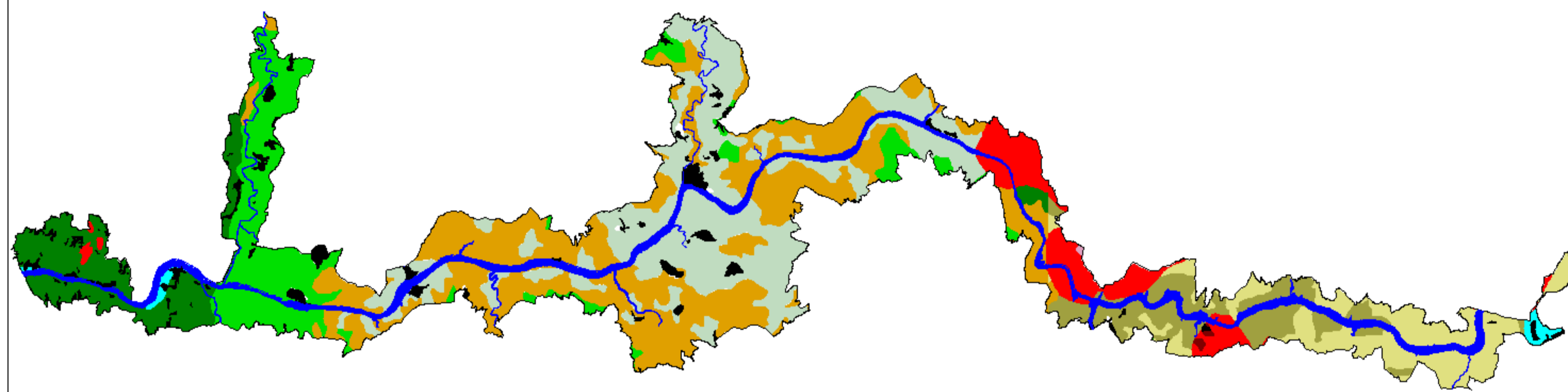


PLANO INTERMUNICIPAL DE ORDENAMENTO DO TERRITÓRIO ALTO DOURO VINHAIEIRO (PIOT-ADV)	
MODELO DIGITAL DO TERRENO - Declives	
LEGENDA :	
□ Limite do PIOT - ADV	
Declive ( % )	
■	0 - 15
■	15 - 30
■	30 - 40
■	40 - 50
■	> 50
↑	Escala : 1/145000
Carta n.º 2	
 Universidade do Trás-os-Montes e Alto Douro	Julho 2001





PLANO INTERMUNICIPAL DE ORDENAMENTO DO TERRITÓRIO ALTO DOURO VINHATEIRO (PIOT-ADV)	
GEOLOGIA	
LEGENDA :	
	Limite do PIOT - ADV
	Ordovícico - Silúrico indiferenciados
	Formações do Rio Pinhão e S. Domingos
	Formações do Pinhão, Ervedosa e Desejosa
	Formação de Bateiras
	Formações Aliviás
	Formações Graníticas
	Escala : 1/145000
Carta n.º 3	
Universidade de Trás-os-Montes e Alto Douro	
Julho 2001	



PLANO INTERMUNICIPAL DE ORDENAMENTO DO TERRITÓRIO  
ALTO DOURO VINHATEIRO (PIOT-ADV)


UNIDADE-SOLO PRINCIPAL

LEGENDA :

- Limite do PIOT - ADV
- ANTROSSOLOS**
  - Eutrícos de xistos - Iaxax
  - Distúcos de xistos - Iaxdx 1.1
  - Distúcos de xistos - Iaxdx 1.2
  - Distúcos de xistos - Iaxdx 3.1, Iaxdx 3.2, Iaxdx 3.3
  - Distúcos de granitos - Iaxdg
- LEPIOSSOLOS**
  - Eutrícos de xistos - Ilox
  - Distúcos de xistos - Ilox
  - de granitos - Ilg, Lux, Hox
- CAMBISOLOS**
  - de granitos - Edox
- FLUVISSOLOS**
  - de aluviões - Idox, Jaa

Escala : 1/165000

Carta n.º 44





 Universidade da Trás-os-Montes e Alto Douro

Julho 2001

PLANO INTERMUNICIPAL DE ORDENAMENTO DO TERRITÓRIO  
ALTO DOURO VINHATEIRO (PIOT-ADV)

USO DO SOLO

LEGENDA :

-  Limite do PIOT - ADV
-  Limite dos Concelhos
-  Sedes de Concelho
-  Vinhas
-  Olival
-  Amendoal
-  Laranjal
-  Outras Culturas
-  Povoamentos Florestais
-  Matas
-  Matos
-  Galerias Ripícolas
-  Áreas Sociais



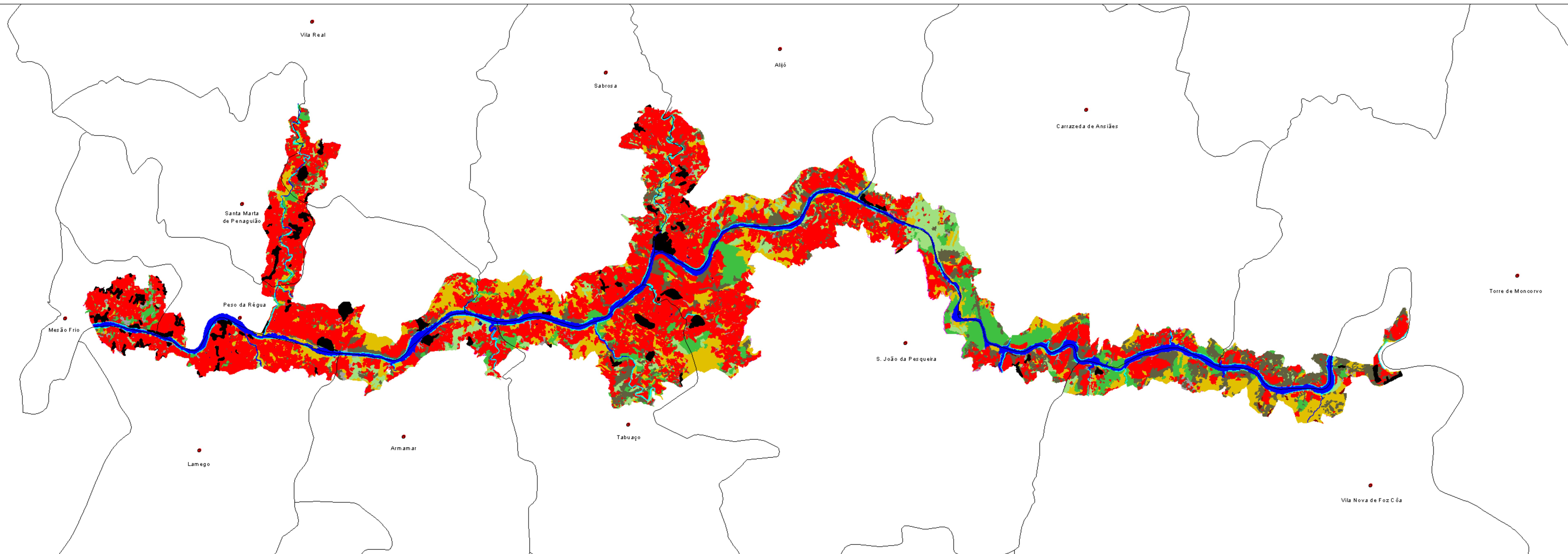
Escala : 1/100000

Carta nº 4.5












Universidade de Trás-os-Montes e Alto Douro

Julho 2001



ARMAÇÃO DO TERRENO

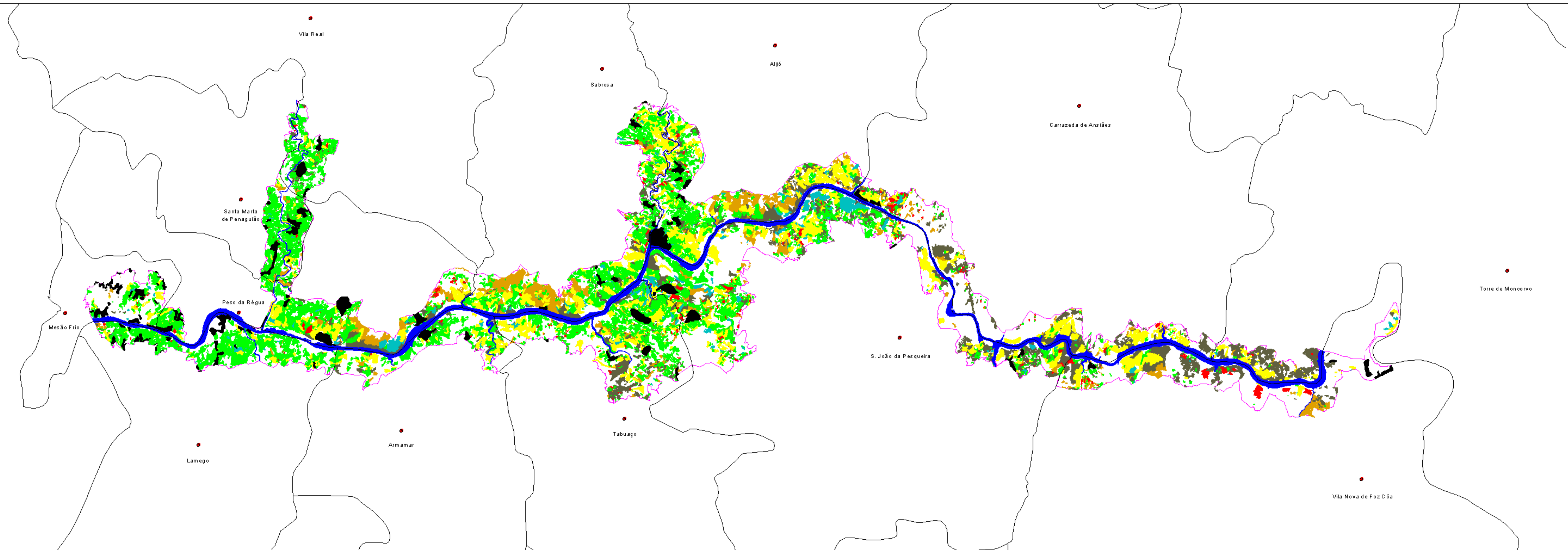
LEGENDA :

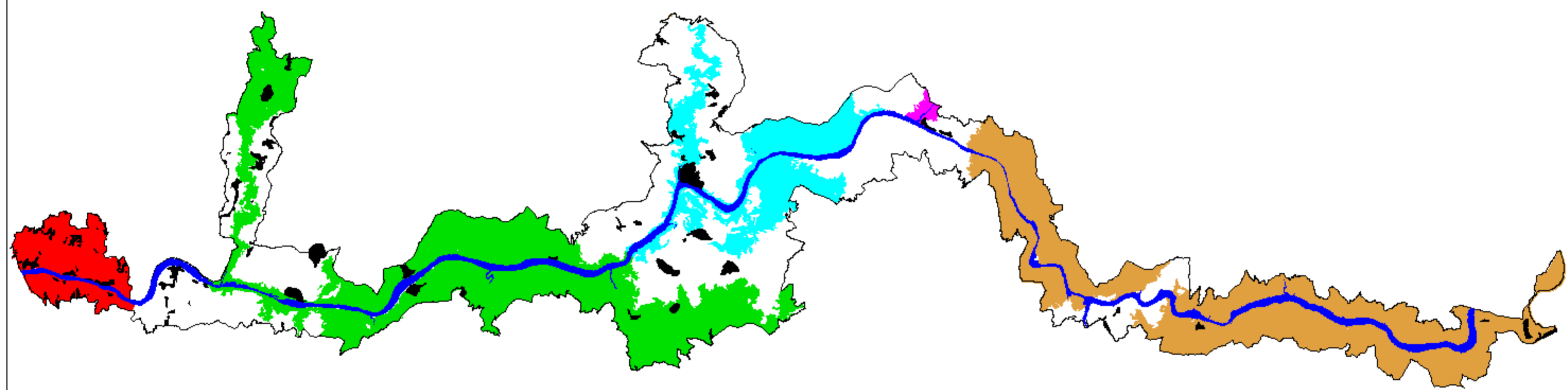
-  Limite do PIOT - ADV
-  Limite dos Concelhos
-  Sedes de Concelho
-  Vinhas em terraços pré-filoxera
-  Vinhas em terraços pós-filoxera
-  Vinhas em patamares
-  Vinhas "ao alto"
-  Olival em "mortório"
-  Matos em "mortório"



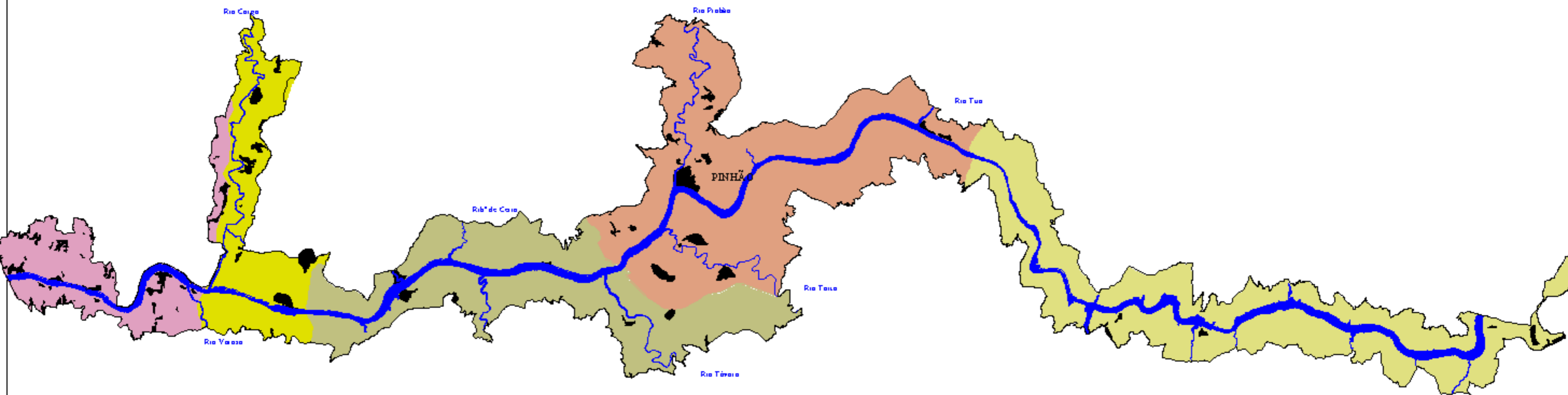
Escala : 1/100000

Carta nº 4.6

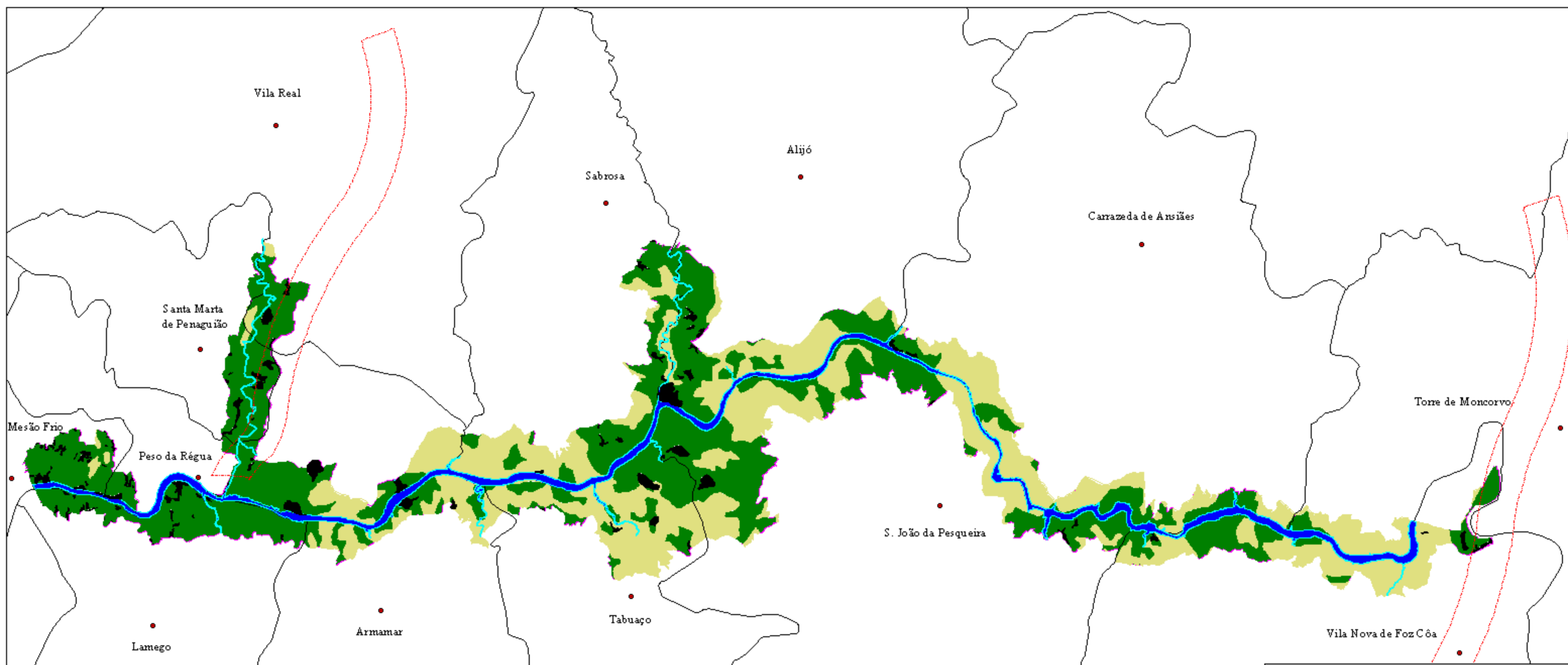




PLANO INTERMUNICIPAL DE ORDENAMENTO DO TERRITÓRIO ALTO DOURO VINHATEIRO (PIOT-ADV)	
ÁREAS DE VEGETAÇÃO SEGUNDO O INTERESSE CONSERVACIONISTA	
LEGENDA :	
	Limite PIOT - ADV
	Régua
	Corgo
	Pinhão
	Tua
	Tua - Côa
	Escala : 1/165000
	Carta n.º 51
Julho 2001	



PLANO INTERMUNICIPAL DE ORDENAMENTO DO TERRITÓRIO ALTO DOURO VINHATEIRO (PIOT-ADV)	
UNIDADES DE PAISAGEM	
LEGENDA :	
	Limite PIOT - ADV
	Extremadouro
	Corgo / Varosa
	Ceira / Távora
	Pinhão / Torto
	Tua / Sabor
	Escala : 1/145000
	Carta n. 52
Universidade do Trás-os-Montes e Alto Douro	Julho 2001

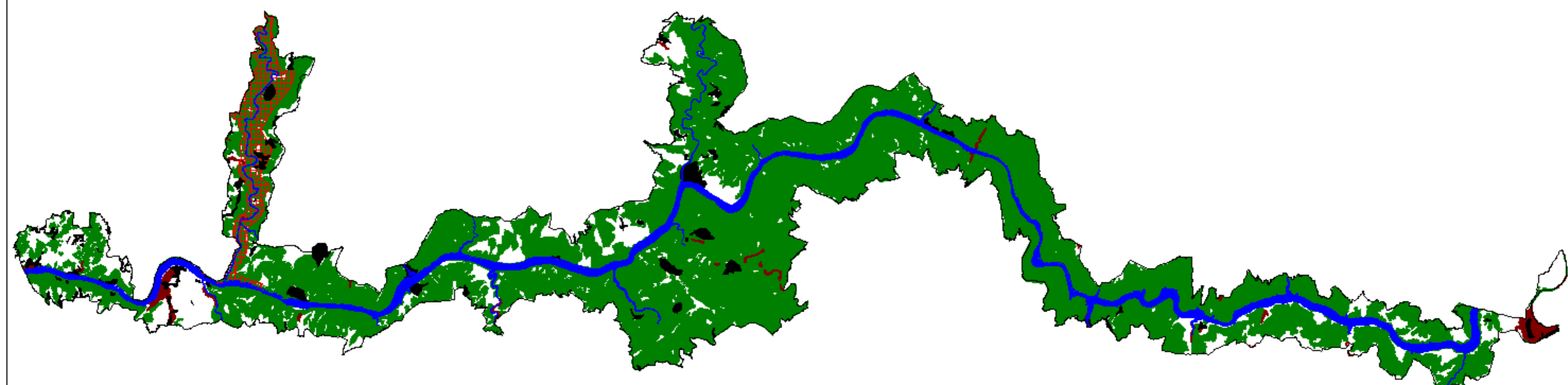


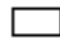





PLANO INTERMUNICIPAL DE ORDENAMENTO DO TERRITÓRIO  
ALTO DOURO VINHATEIRO (PIOT-ADV)

MODELO DE ORGANIZAÇÃO DO TERRITÓRIO

- LEGENDA :
- Limite do PIOT - ADV
  - Espaço Agrícola - Culturas Permanentes Mediterrânicas
  - Espaço Natural - Matos Mediterrânicos
  - Galerias Ripícolas
  - Plano de Água
  - Solo Urbano
  - Espaços Canais
  - Limite dos Concelhos
  - Sedes de Concelho

Escala : 1/145000 Carta n.º 71



PLANO INTERMUNICIPAL DE ORDENAMENTO DO TERRITÓRIO ALTO DOURO VINHATEIRO (PIOT-ADV)	
ESTRUTURA ECOLÓGICA	
LEGENDA :	
	Limite do PIOT - ADV
	Habitats - Rede Natura
	RAN
	REN
	Escala : 1/145000
Carta n.º 72	
	Universidade de Trás-os-Montes e Alto Douro
Julho 2001	